

SAX239 R2

[30 – 520] MHz Tunable Bandpass Filter

Application

The SAX239 R2 electronically tunable bandpass filter is designed for Tactical Communications Applications using binary weighted digital tunable capacitor arrays to cover greater than an octave bandwidth. It is a pin to pin and functional replacement for the SAX239 offering exciting new features.



Features

- Full Tactical Communications band resolutions
- Low insertion loss
- Fast tuning across band to 1.0 MHz resolution
- 33 dBm P1dB
- DC Power < 100 mW

Specifications

Mechanical	Dimensions	[1.2 x 1.2 x 0.25] inches	
RF Power Handling	P1dB	+33 dBm	
Filter Performance	Tuning Range	[30 – 520] MHz	
	Input / Output Impedance	50 ohm	
	Tuning Step Size	1.0 MHz from (30-88) MHz 2.0 MHz from (90-520) MHz	
	Bandpass Bandwidth	3.5% typical	
	Insertion Loss @ fc	< 4.5 dB typical	
	Bandpass VSWR	1.5:1 typical, 2.0:1 max.	
	Rejection	Ftune +/- 10% > 15 dB typical Ftune +/- 15% > 20 dB Ftune +/- 20% > 27 dB 30 MHz to 0.5*Ftune > 40 dB [2*Ftune to 750] MHz > 35 dB [750 – 1000] MHz > 25 dB	
	Noise Figure	< 0.5 dB above Insertion Loss	
	Control & Interface	Tuning Control	Serial [SPI]
		DC Power	3.5V +/- 0.2V < 30 mA Option for external +35V (see Note 1)
Tuning Speed		40 μ s max. 25 μ s typical	
Tuning Algorithm		Binary equivalent to desired tune frequency (MHz)	

Note 1: SAX239 Rev 2 can be used in 2-modes.

Mode 1 has internal dc –dc converter, and the unit powered via +3.5V [+/- 0.2V] only.

Mode 2 is powered via external +3.5V [+/-0.2V] and external +35V [+/-1.0V].

Mode	Pin 24	Pin 12	Pin 18
1	+3.5V +/-0.2V	N/C	N/C
2	+3.5V +/-0.2V	+35V +/- 1.0V	GND

The SAX239 Tunable Filter is controlled as a slave SPI device. The control registers are write only, so there are only three SPI signals required:

- CS input: When CS is low, the SPI bus is enabled.
When CS is high, signals on the other SPI inputs are ignored.
- SCLK: Serial data clock generated by the SPI bus master.
- MOSI: Data from master to slave (Master Out, Slave In).

The timing of the SPI bus is:

- The base value of the clock is low (0).
- The SAX239 reads the incoming data (MOSI) on the rising edge of the clock SCLK.
- The maximum allowed SCLK rate is 1.0 MHz.

A single 16-bit tuning word is transmitted to the filter.

The filter will begin to tune to the new frequency upon receipt of the last of the 16 bits.

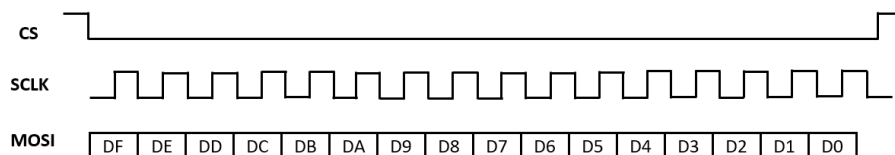
The valid range of tuning bytes in this mode is 0x001E to 0x0208 (30 to 520 decimal).

The SAX239 will tune to the frequency equivalent to the binary tuning word (in MHz).

For tuning words from 89 to 519, the LSB will be set to zero, resulting in 2 MHz frequency resolution.

The figure below shows the SPI bus set command operation:

- The SPI bus master sets CS low and generates the SCLK.
- The master sends a 16-bit filter select word (MSB first) on the MOSI line.
- After the last clock pulse, the SPI bus master sets CS high.



The SPI bus timing requirements are:

Characteristic	Min	Max	Units
SCLK rate	—	1	MHz
CS↓ to SCLK↑	250	—	ns
SCLK↑ to CS↓	415	—	ns
SCLK rise time	—	30	ns
SCLK fall time	—	20	ns
SCLK high time	25	—	ns
SCLK low time	25	—	ns
MOSI setup time	25	—	ns
MOSI hold time	25	—	ns

Environmental

Operating Temp.

[-40 to +85] C.

Vibration

Vehicular to MIL_STD_810G Method 514.6

Jet Fighter to MIL_STD_810F Method 514.5G

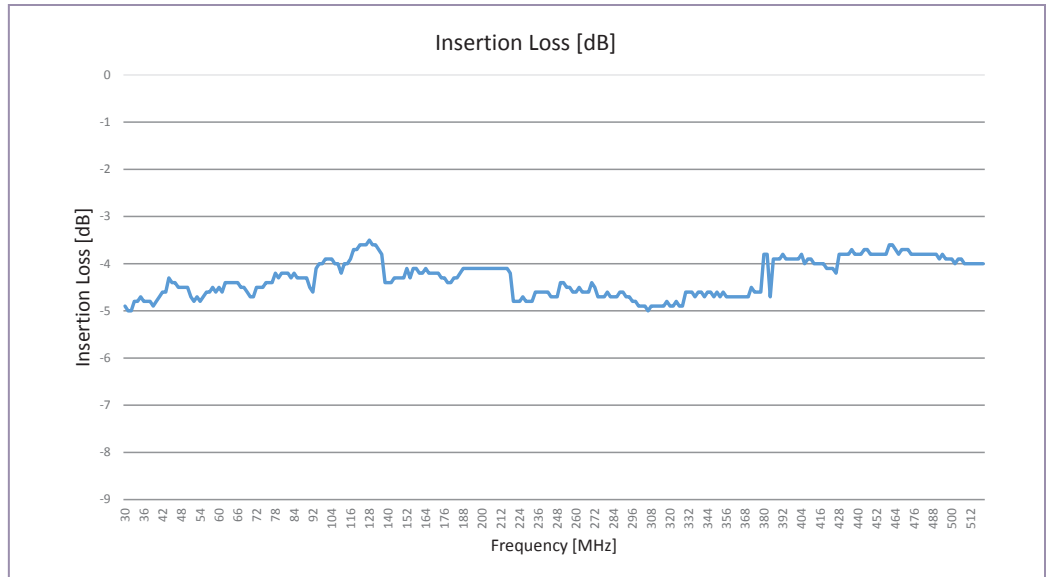
Reflow

260°C [max] for 45 second [max]

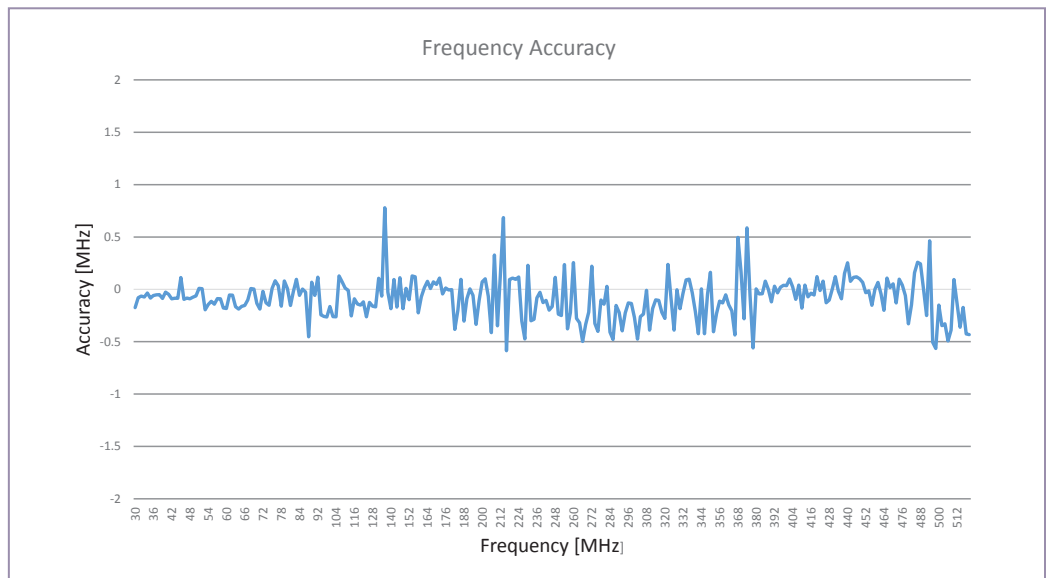
Recommended to keep the SAX239 unit on top side of the board to aid reflow.

Contact NewEdge Signal Solutions for further assistance.

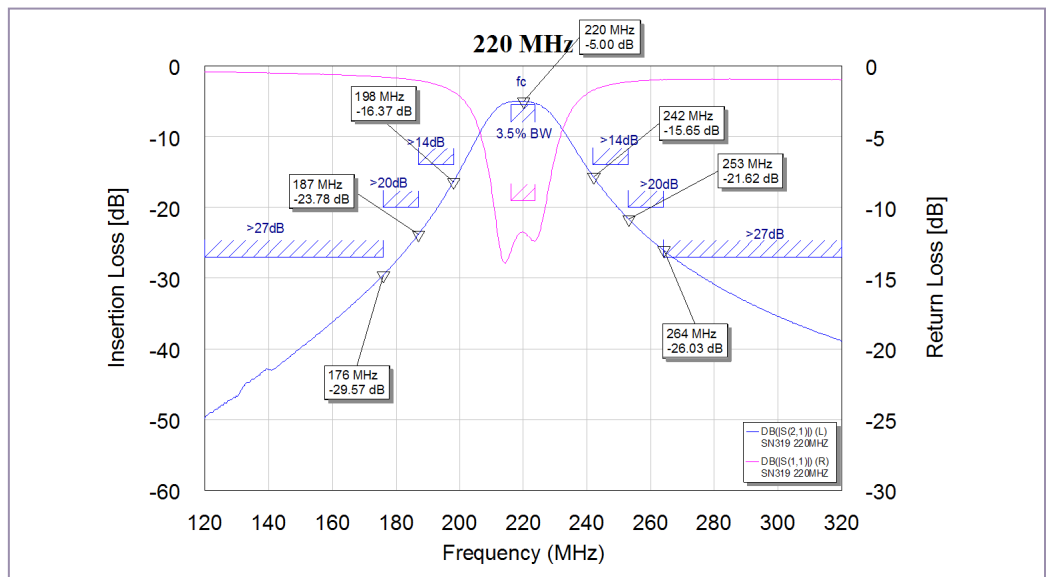
SAX239-R2 Passband IL over [30-520] MHz Tuning Range

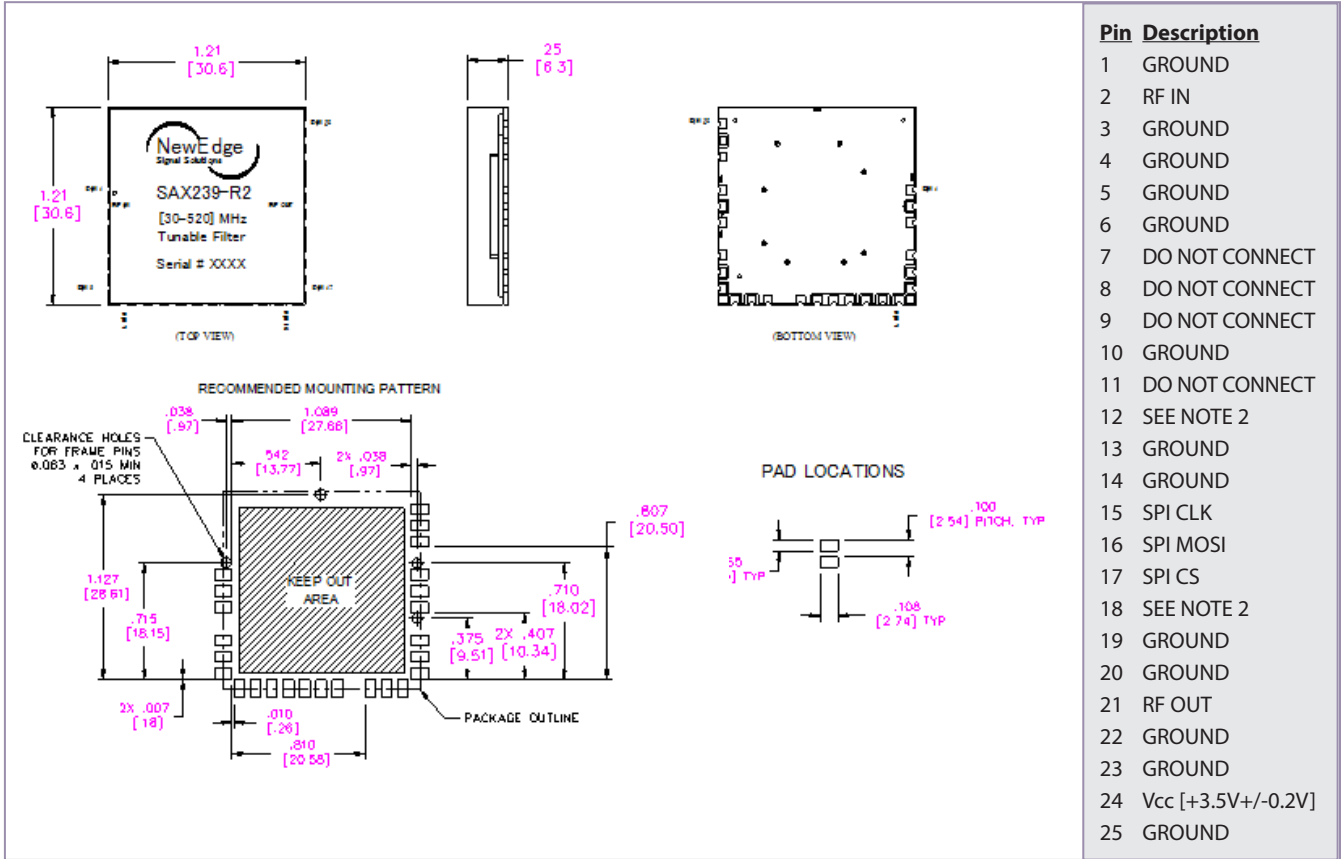


SAX239-R2 Step Size & Frequency Accuracy



SAX239-R2 Passband Bandwidth & Rejection





Disclaimer

Specifications are subject to change without notice. NewEdge Signal Solutions, LLC believes the information contained within this data sheet to be accurate and reliable. However, no responsibility is assumed by NewEdge Signal Solutions for any infringement of patents or other rights of third parties which may result from its use. No license is granted by implication or otherwise under any patent or patent rights of NewEdge Signal Solutions. NewEdge Signal Solutions makes no warranty, representation or guarantee regarding the suitability of its products for any particular purpose. "Typical" parameters are the average values expected by NewEdge Signal Solutions in large quantities and are provided for information purposes only. These values can and do vary in different applications and actual performance can vary over time. All operating parameters should be validated by customer's technical experts for each application. NewEdge Signal Solutions products are not designed, intended or authorized for use as components in applications intended for surgical implant into the body or to support or sustain life, in applications in which the failure of the NewEdge Signal Solutions product could result in personal injury or death or in applications for planning, construction, maintenance or direct operation of a nuclear facility. All product sales are governed under NewEdge Signal Solutions Terms and Conditions (<http://www.newedges2.com/TermsandConditions.pdf>) as of date of purchase.

Global Stocking Distributor

Richardson RFPD
www.richardsonrfpd.com

Regional Direct Sales Representatives

Upstate New York & New England: **WLM Components**
www.wlmcomponents.com

Long Island / NJ / Eastern PA: **Sertechmcm**
www.sertechmcm.com

FL / GA / SC / NC / AL / MS / TN: **Eastern Component Sales**
www.easterncomponentsales.com

India Market: **Unified Electro-Tech Pvt. Ltd**
www.unified.co.in email: venkat_reddy@unified.co.in

